

Housing Around the Park

~ 900 existing
residential units
around the park



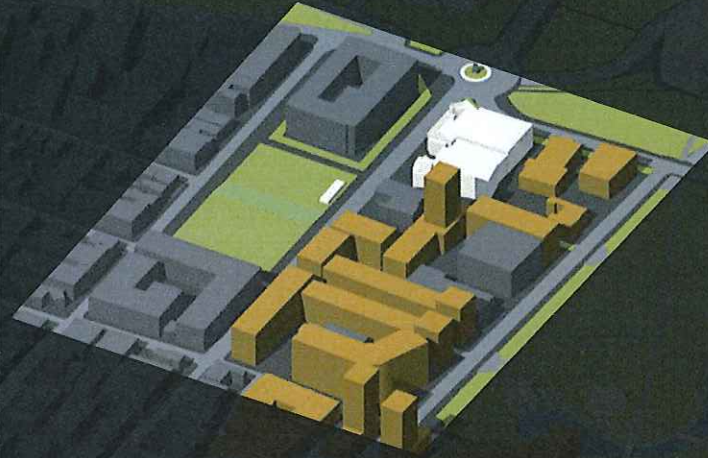
1000-1300
potential
additional units
around the park



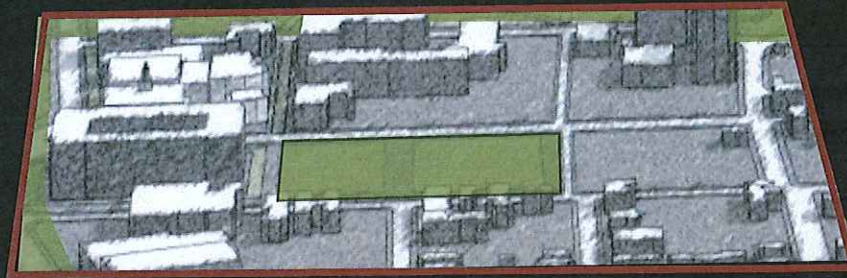
**Focus on a
new neighborhood
on the south side
of the Park:
Connecticut Square**



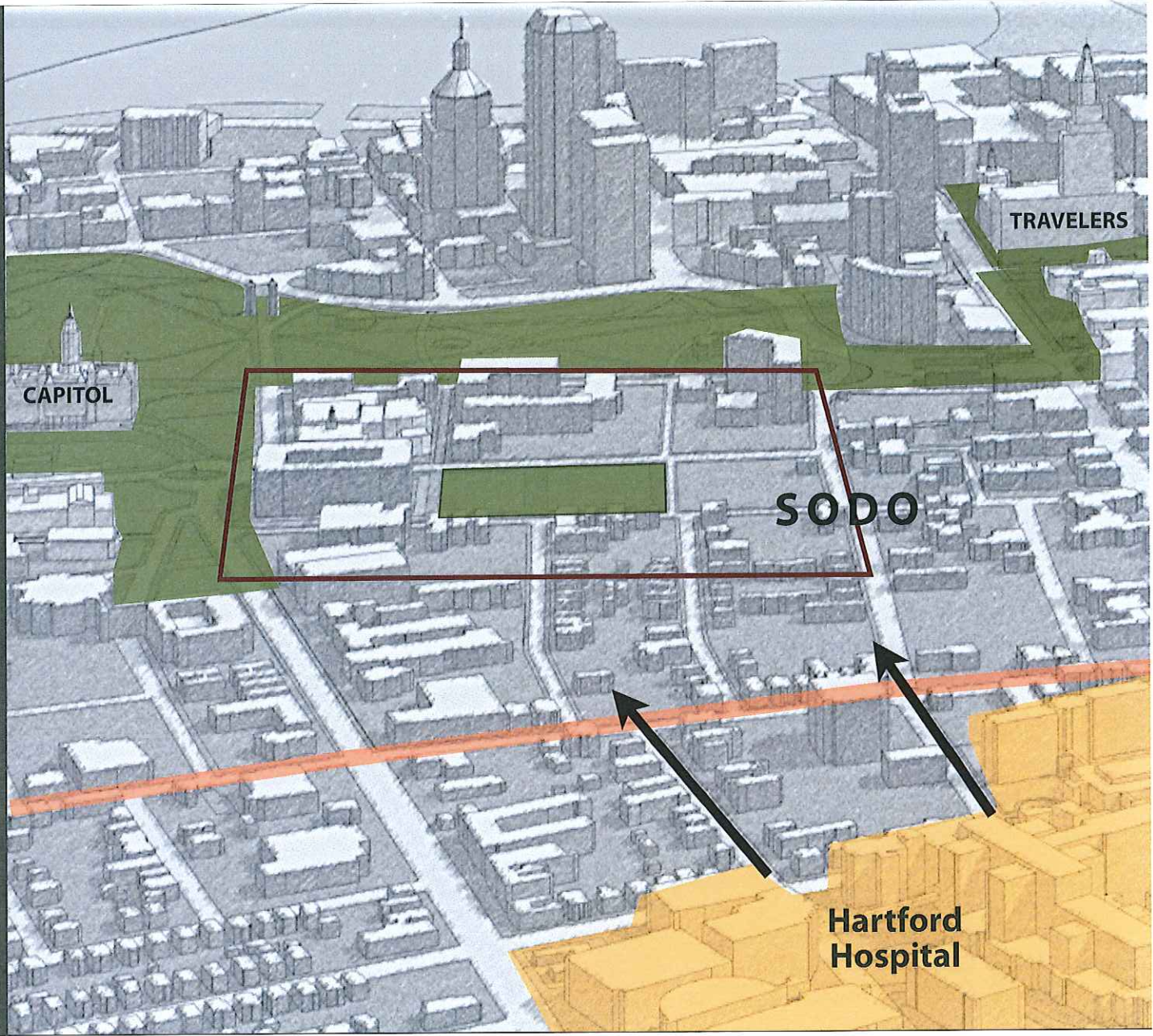
NORTH SIDE
Central Business
District



SOUTH SIDE
Connecticut Square
District



SOUTH SIDE
**Connecticut Square
District**



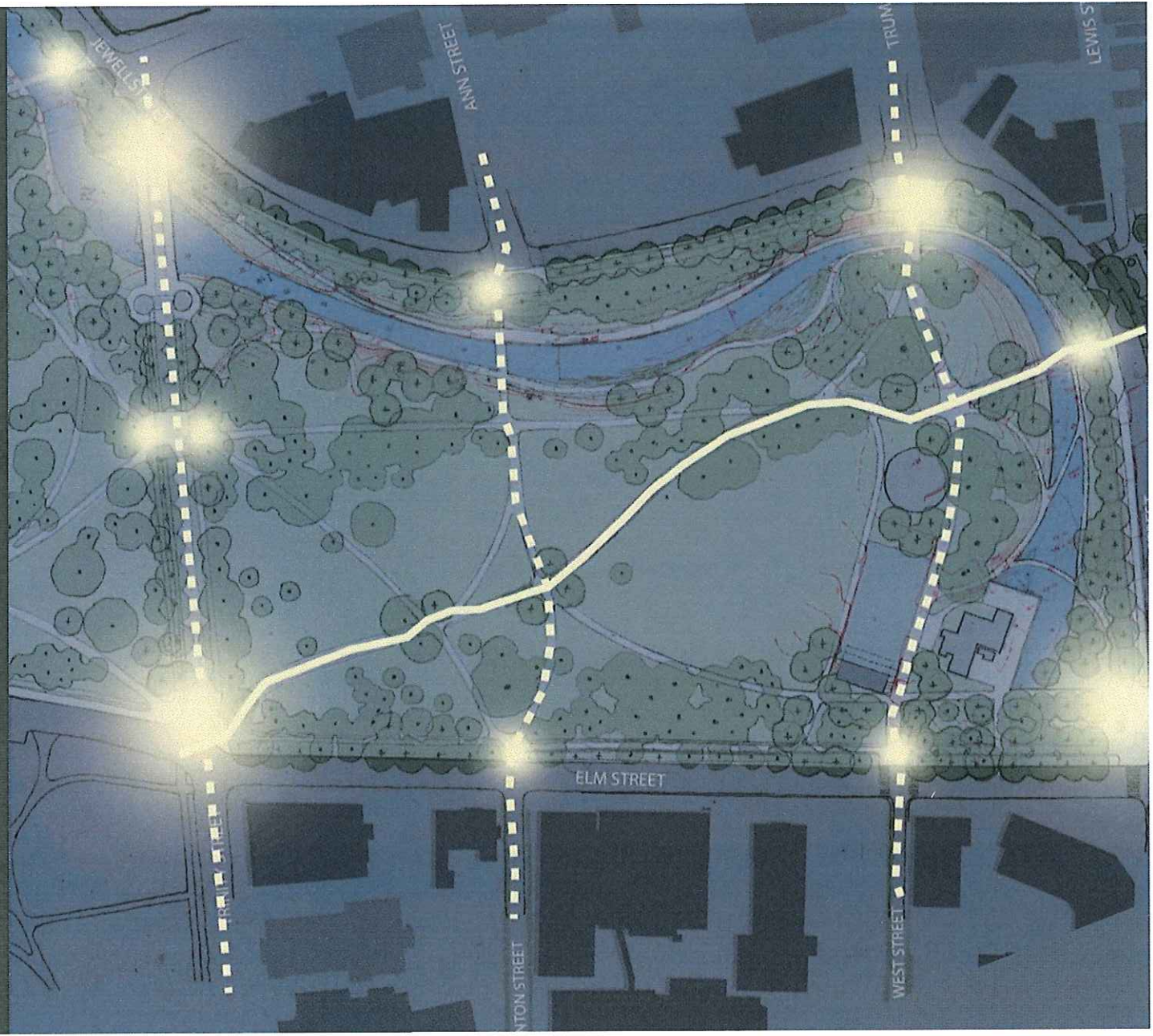
CAPITOL

TRAVELERS

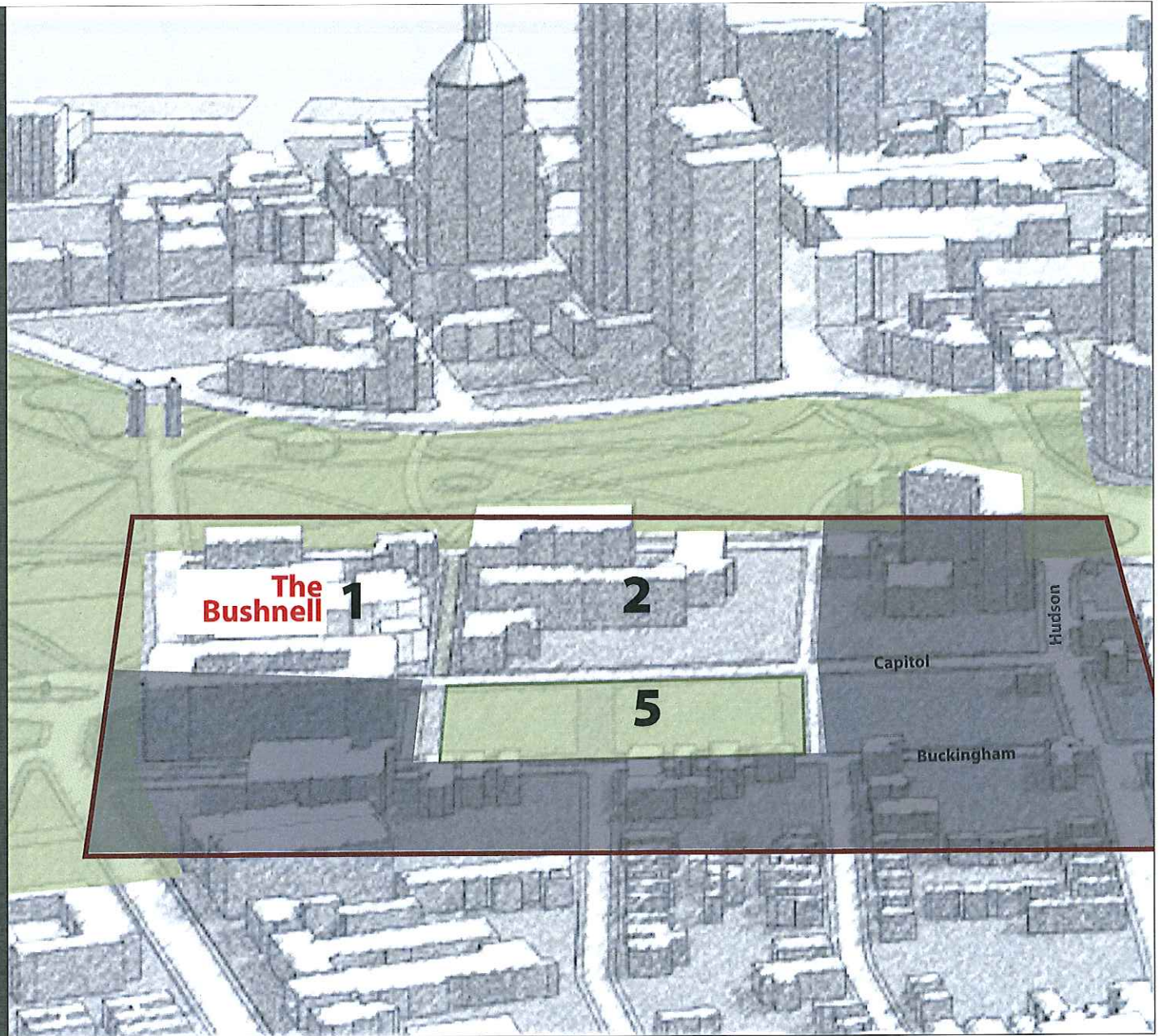
SODO

Hartford
Hospital





Connecticut Square



**The
Bushnell**

1

2

5

Capitol

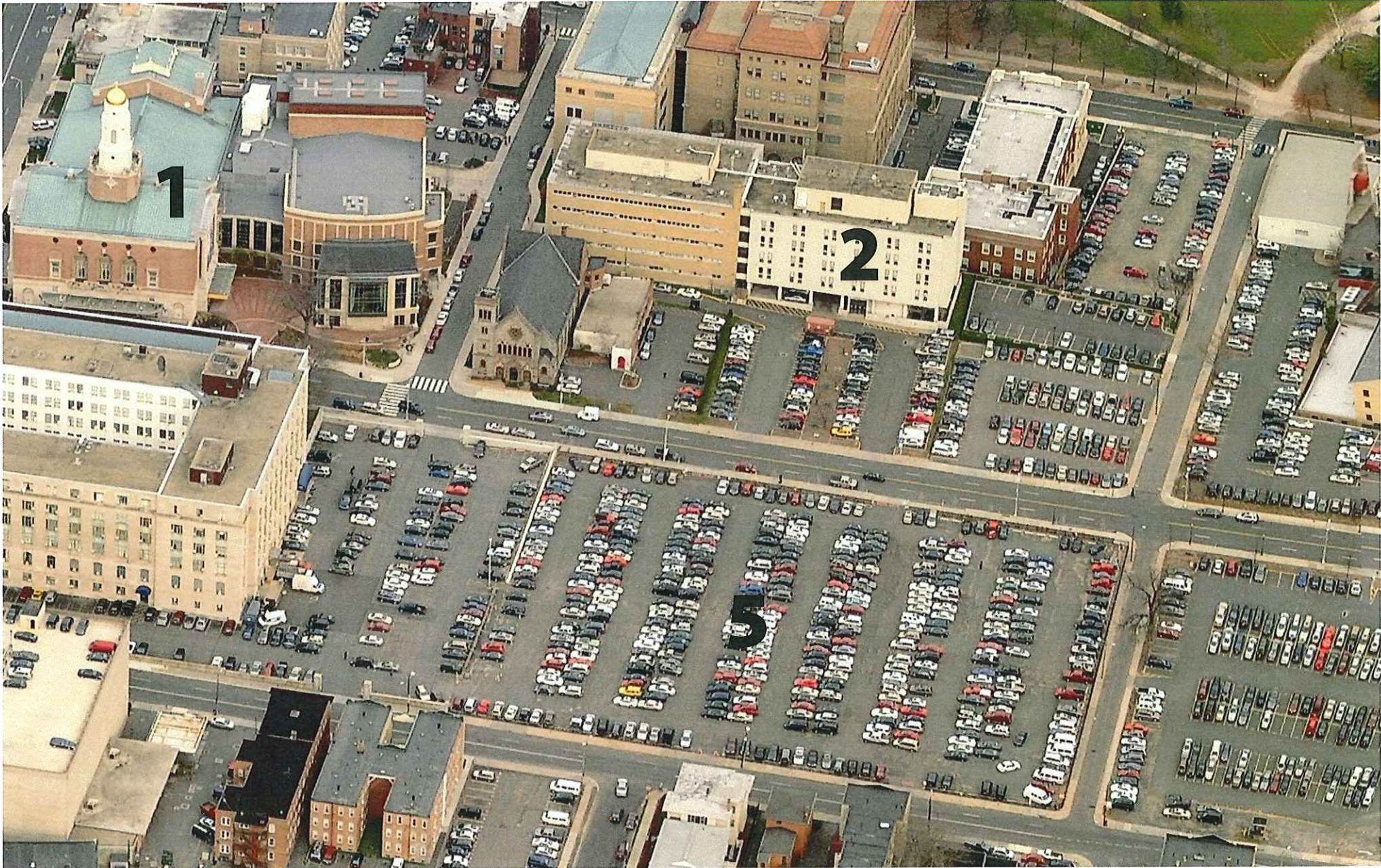
Hudson

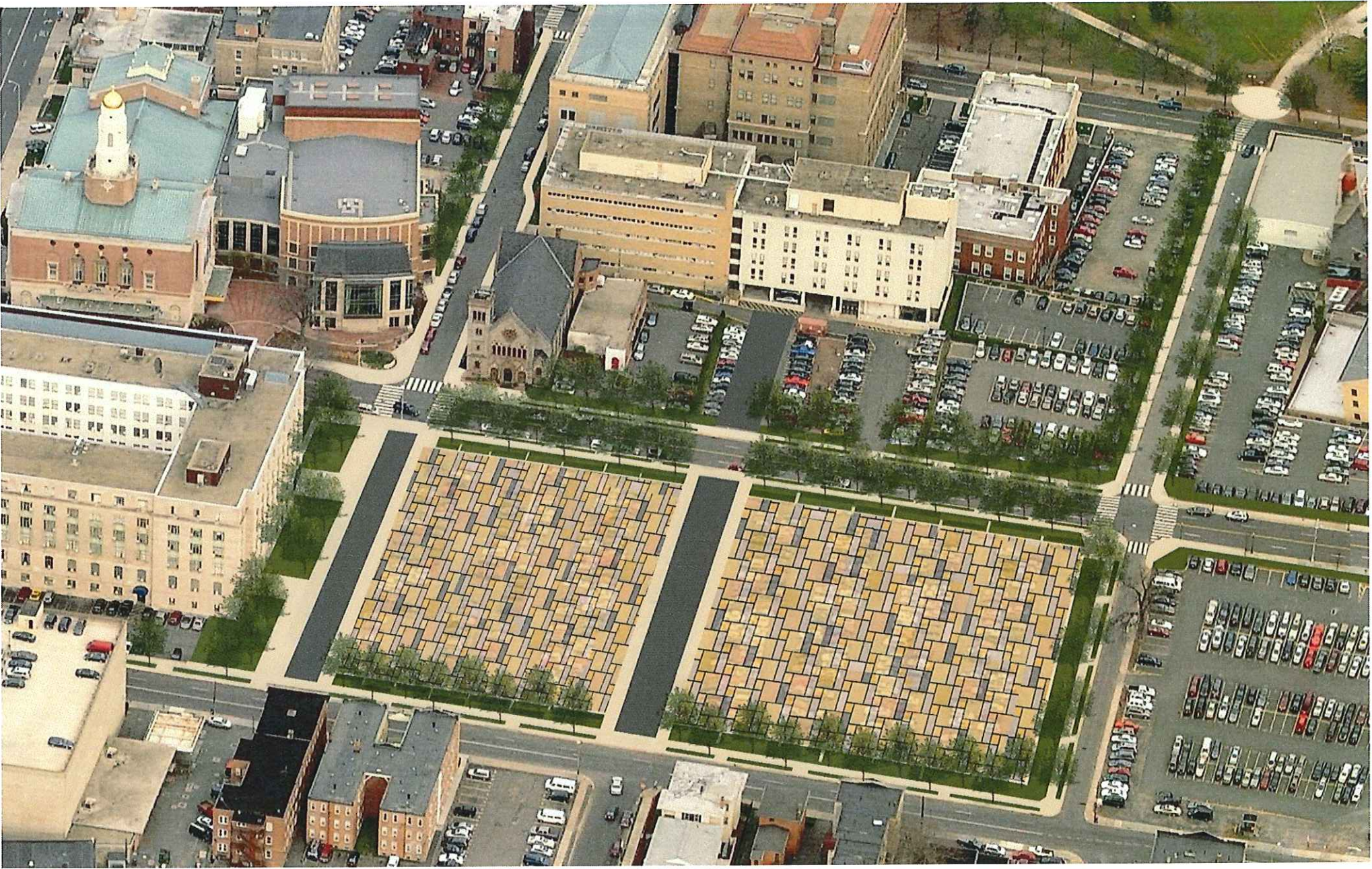
Buckingham

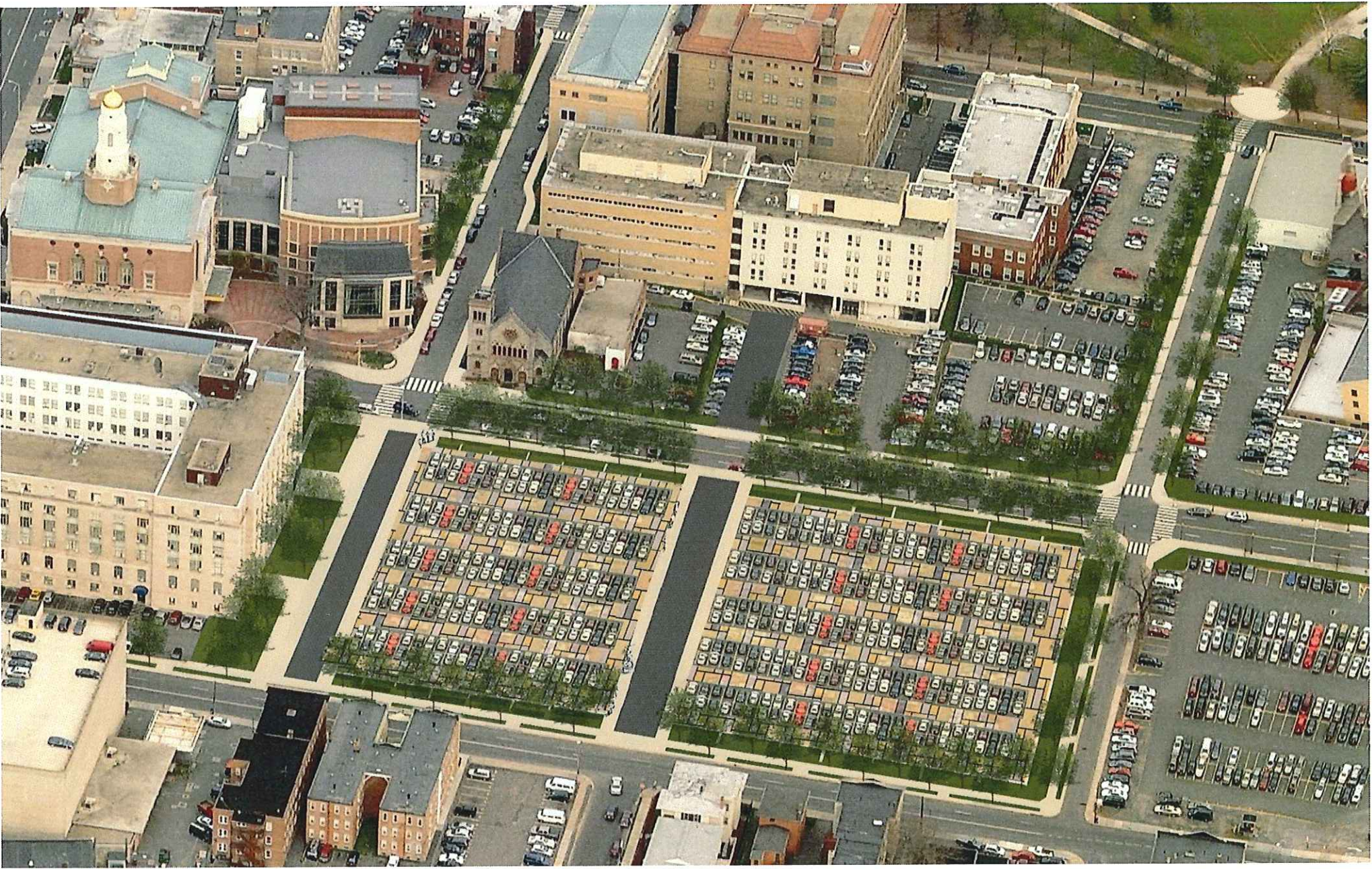
1

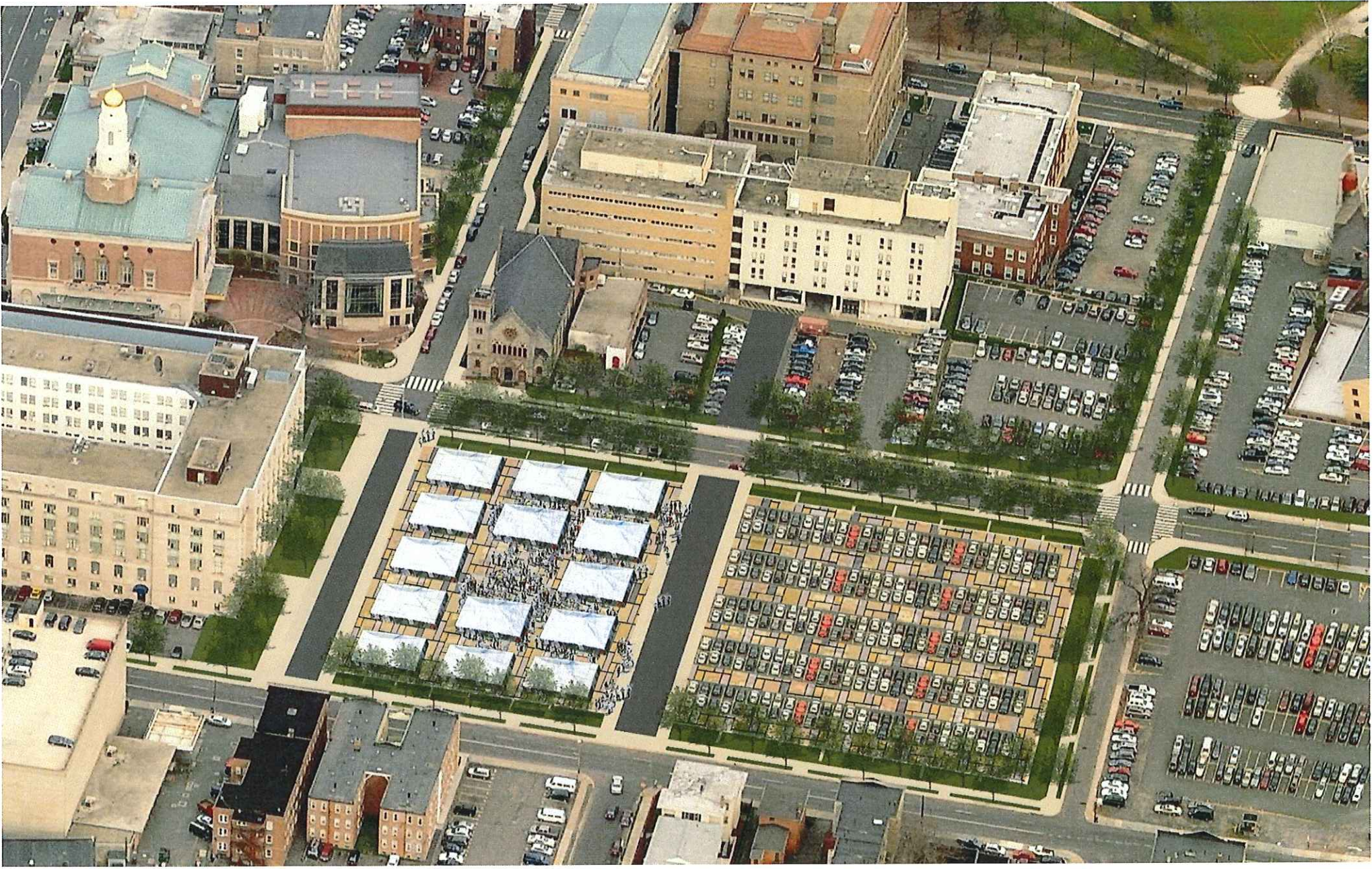
2

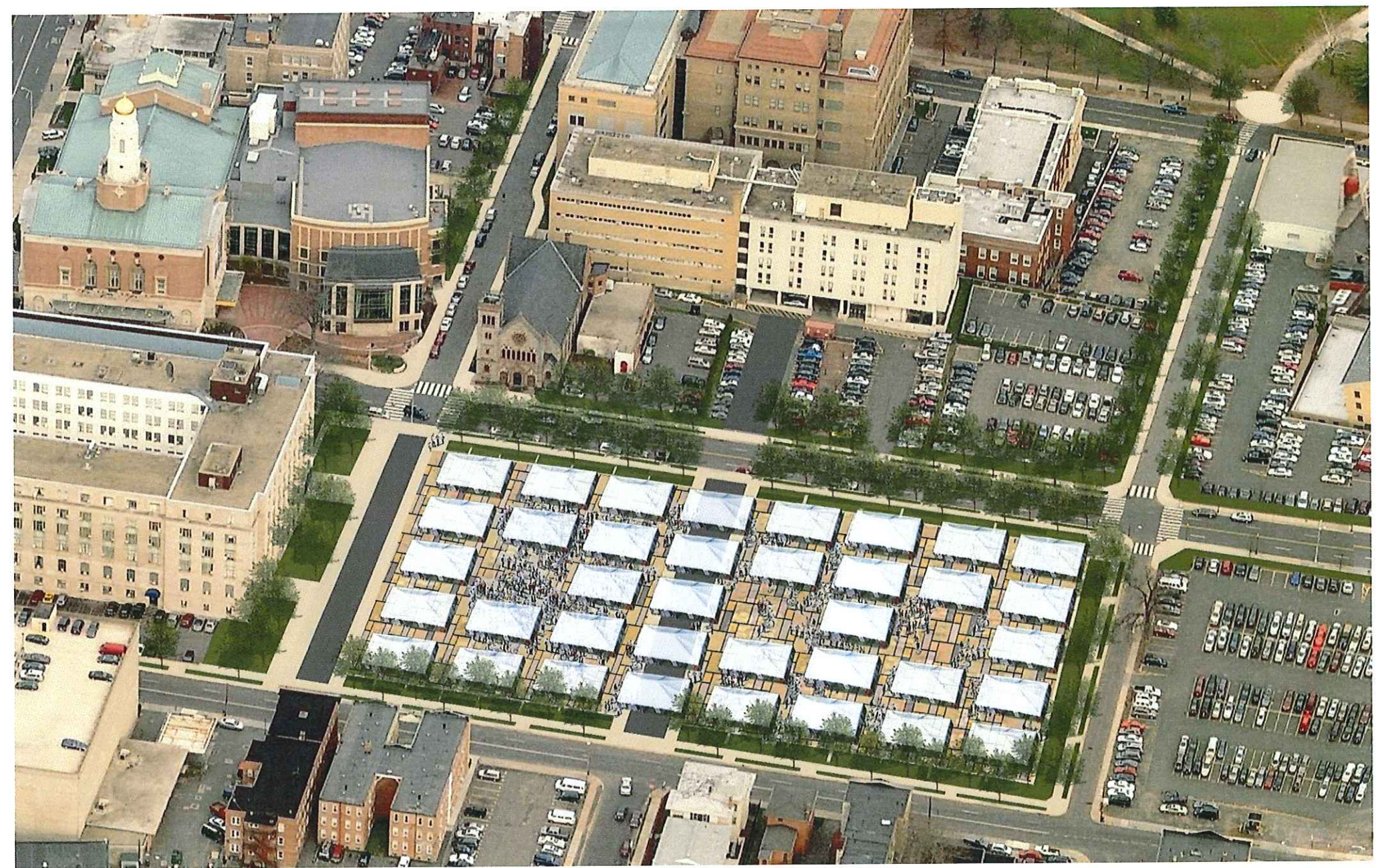
3

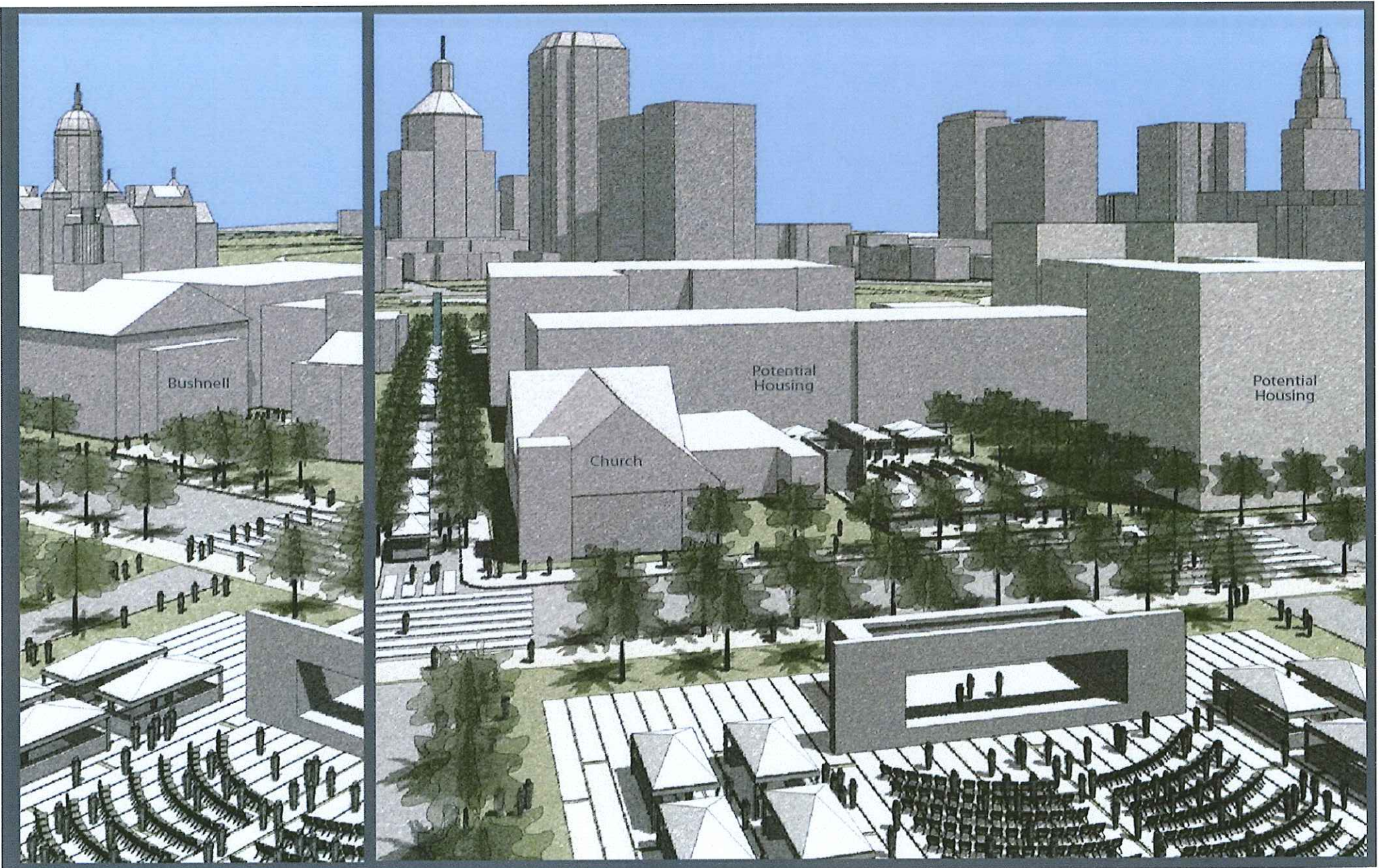


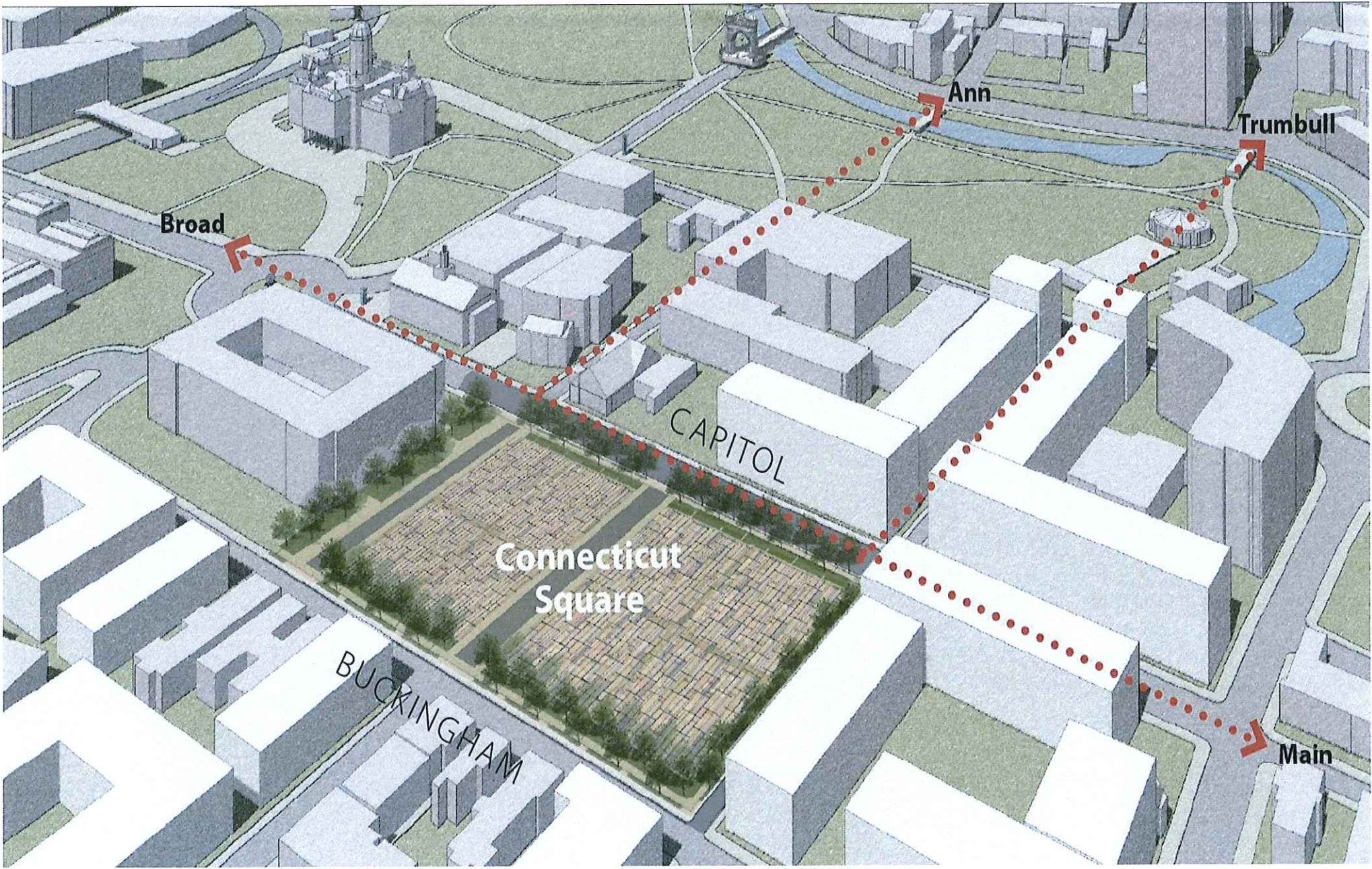




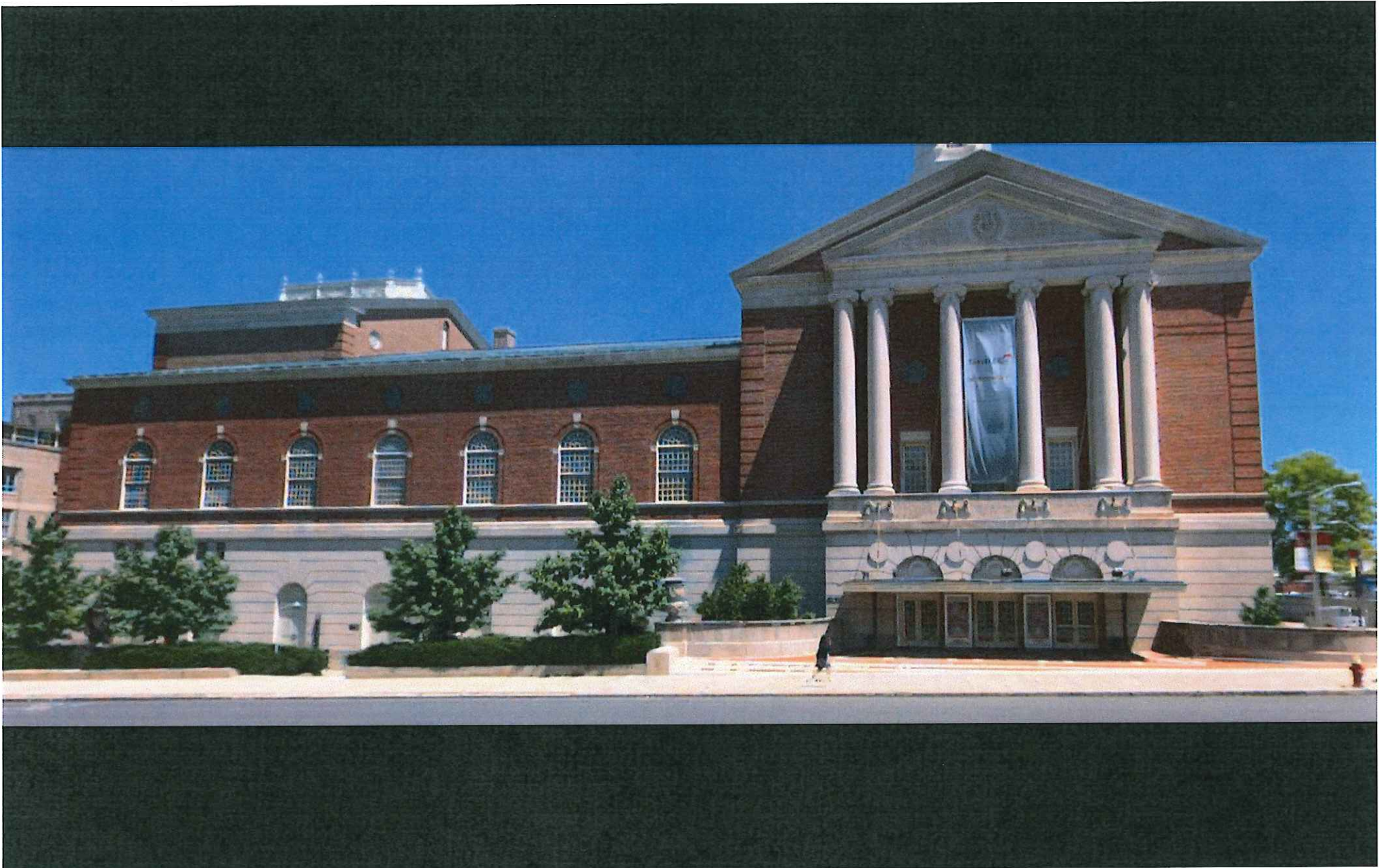




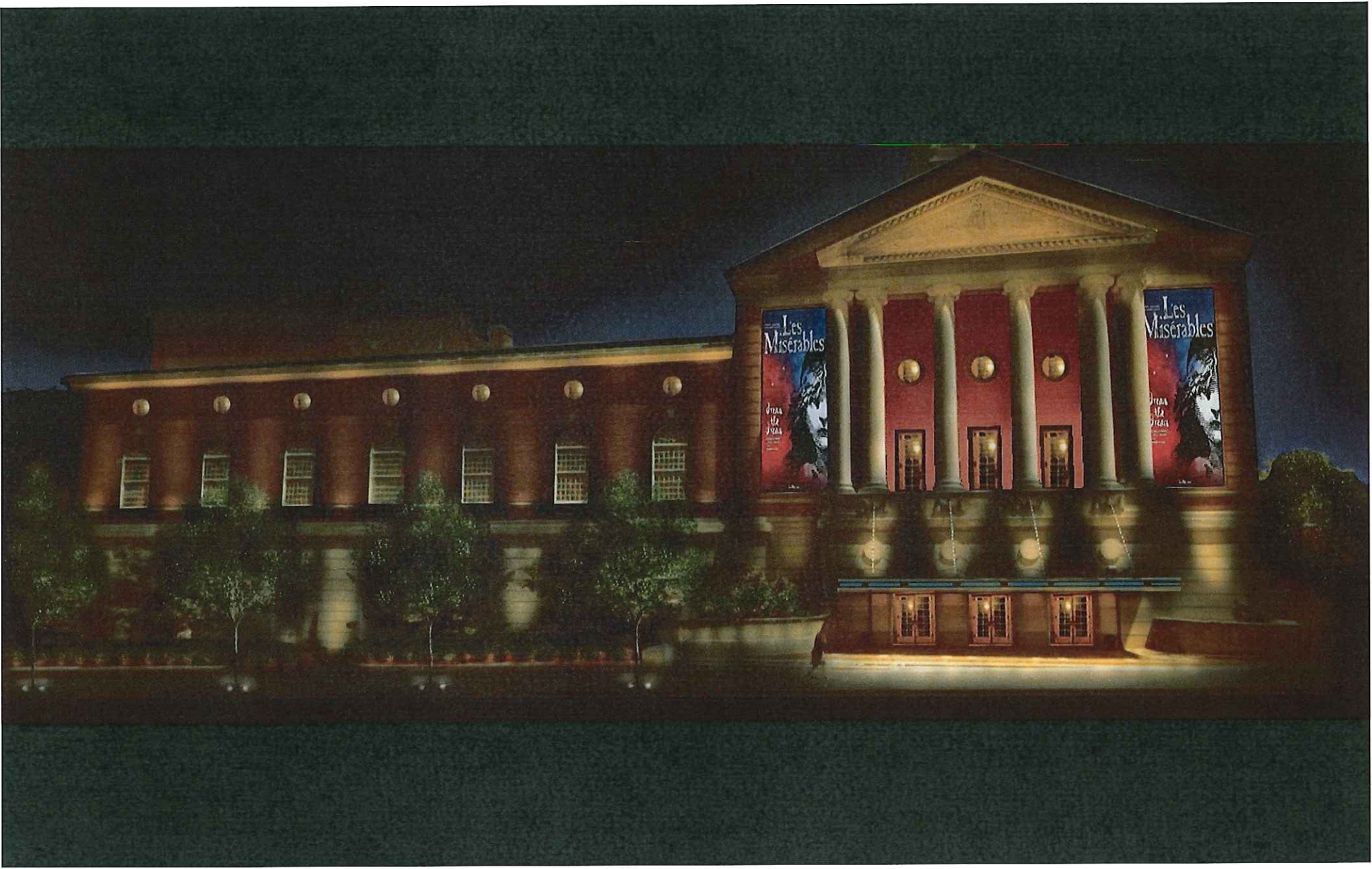




Bushnell Exterior Enhancements









THE BUSHNELL

ENSEN HALL

BELDING THEATER

THE BUSHNELL





THE BUSINESS
of Broadway

P

1

THE BUREAU



THE BUSHNELL CENTER

FOR THE PERFORMING ARTS

MORTENSEN HALL

C&C
CAPTIOU CLINTON
CAFE

**Bushnell Square:
campus and
development strategy**

Bushnell Square



Bushnell Square



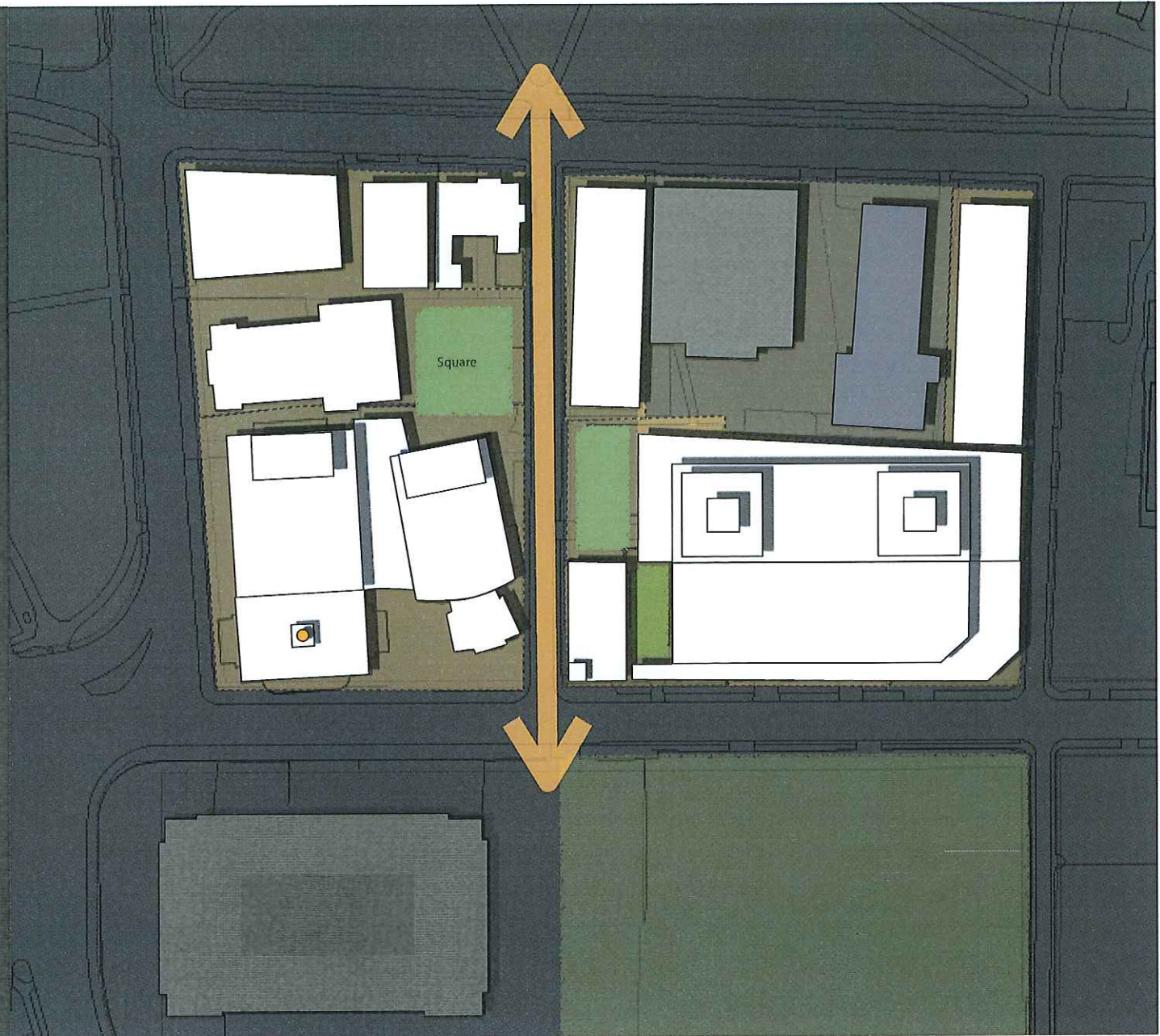
Bushnell Square

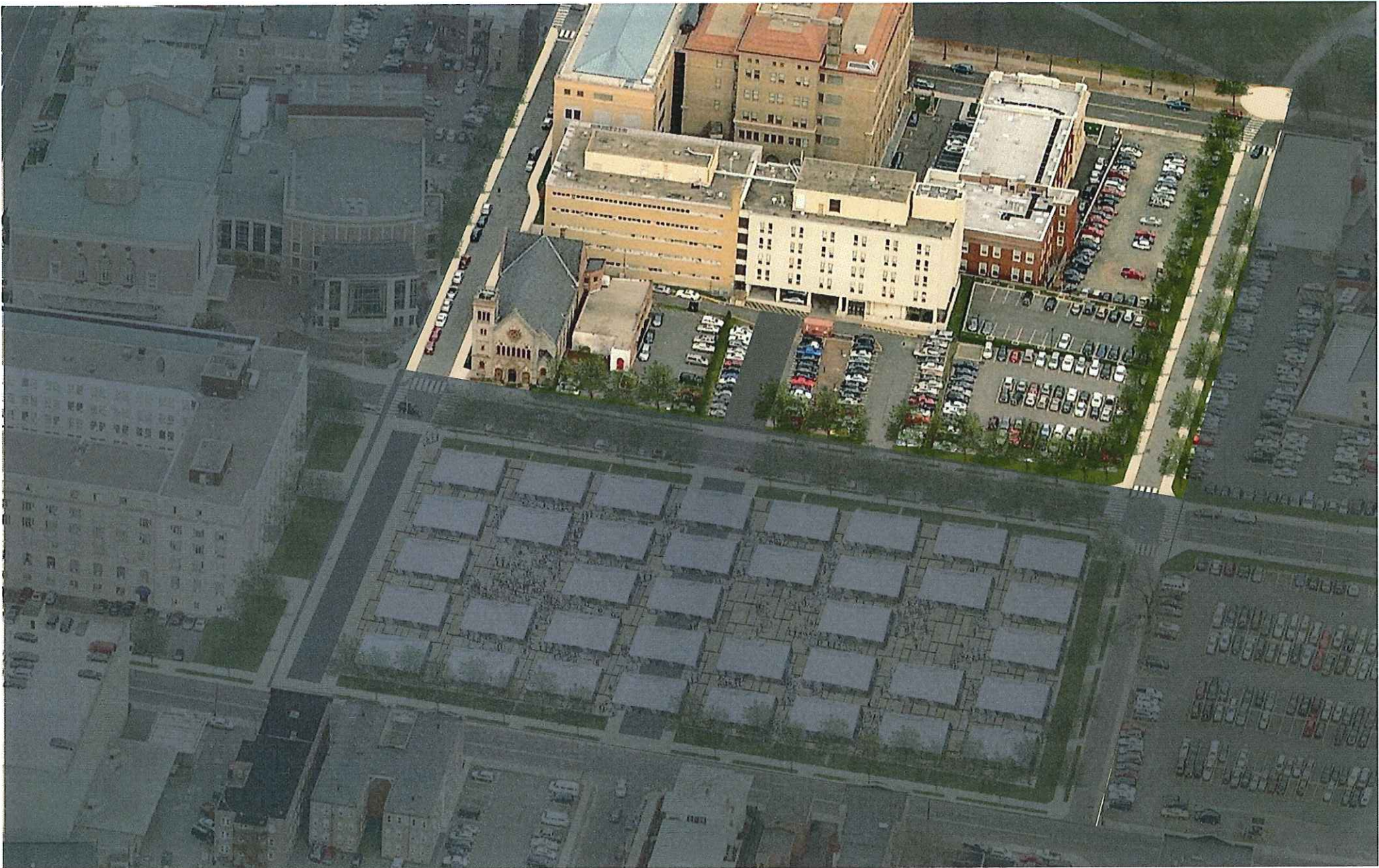


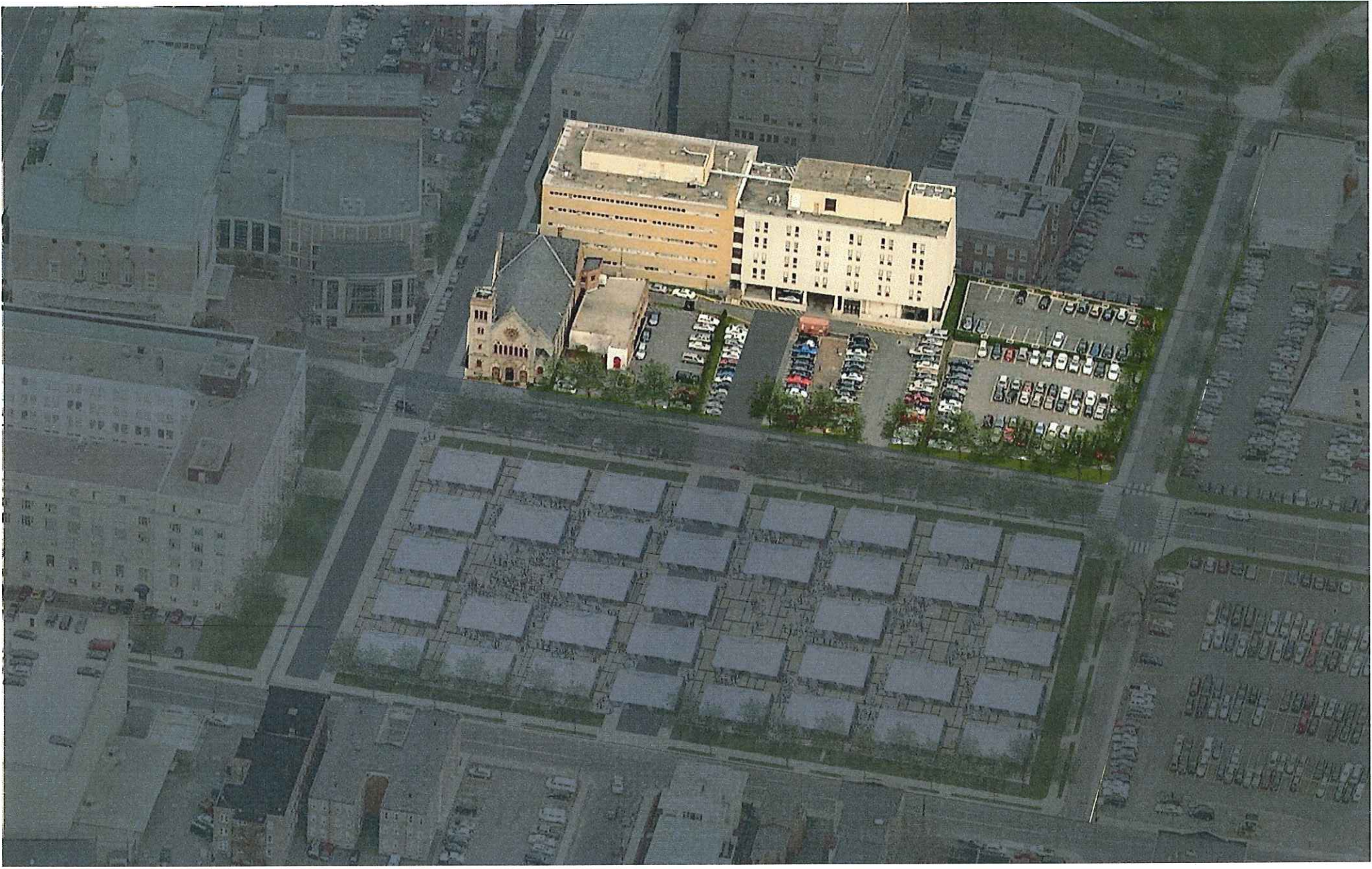
Bushnell Square



Bushnell Square













60 rental units,
(market, affordable)
along Capitol

restaurants, cafe,
shops

patio, gardens

100 condos in
two towers

500 car garage



- 1. Relocation of State Office Space**
- 2. Potential Residential Conversion**
- 3. Renovation of State Office Building**

State offices and private office space - mixing government, culture, residential



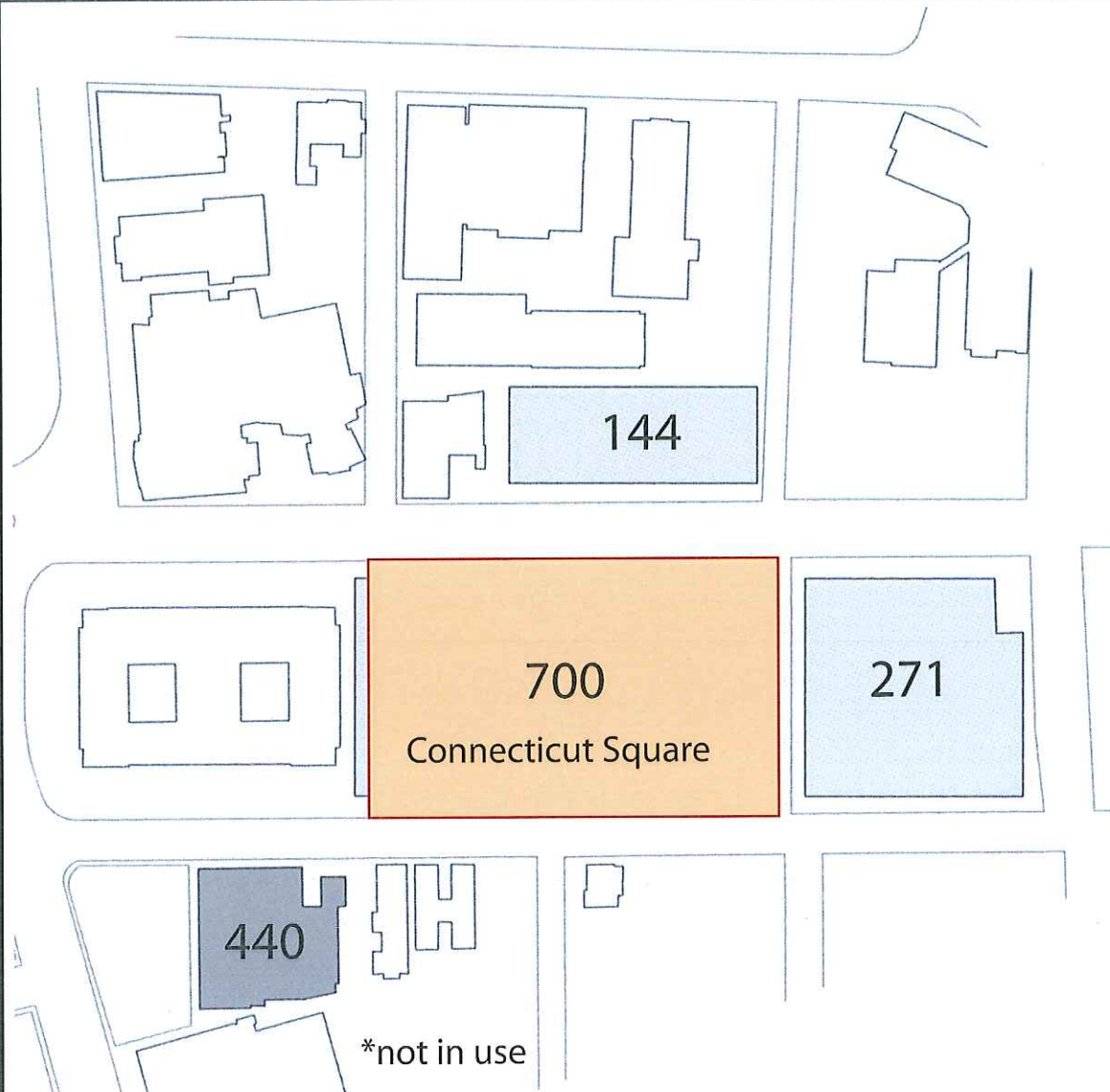
Bushnell Square

PARKING

1140 STATE

415 PRIVATE

1555 TOTAL



144

700

Connecticut Square

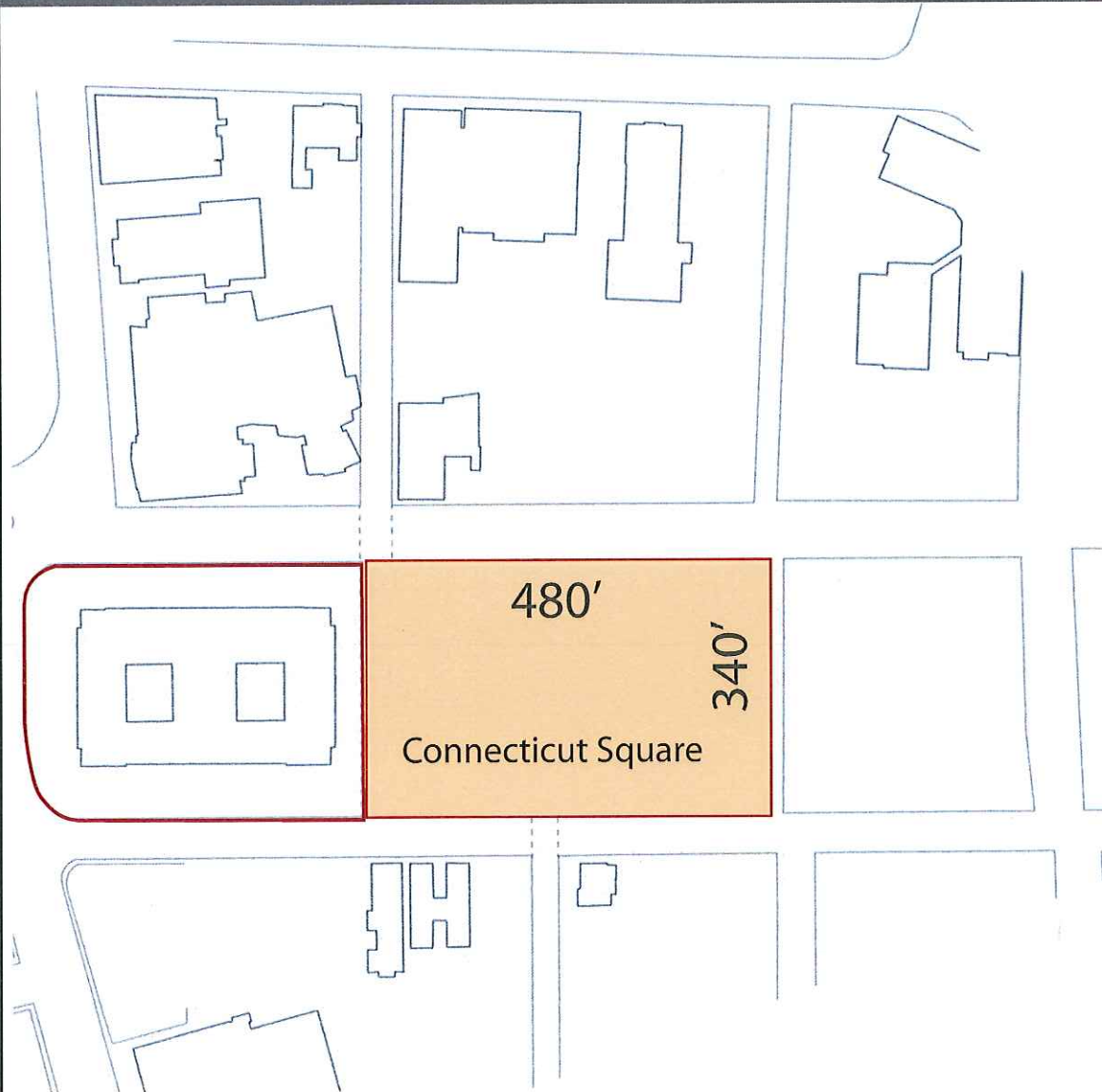
271

440

*not in use

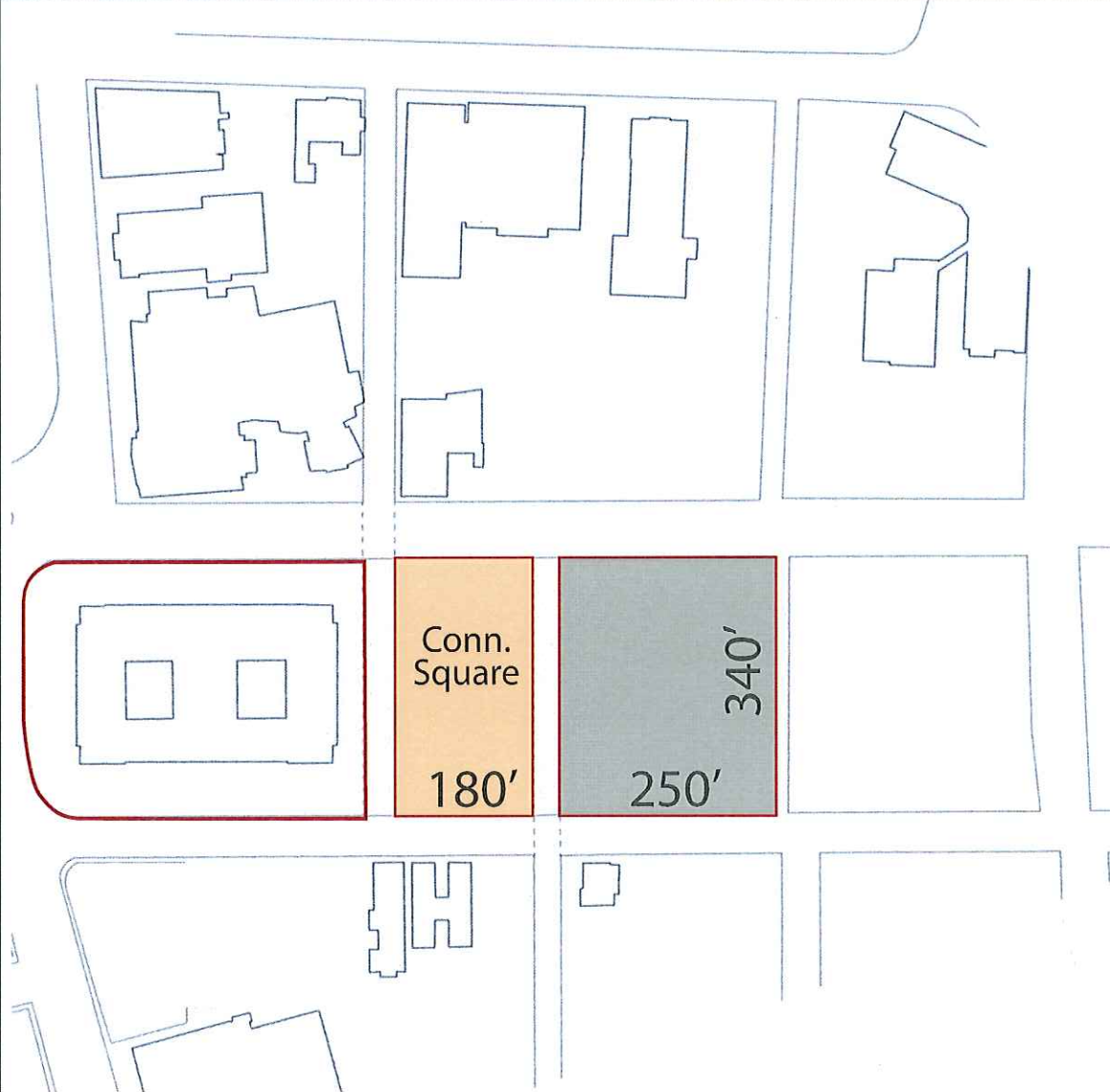
Bushnell Square

PARKING



Bushnell Square

PARKING



Bushnell Square

PARKING

Comparison
Trumbull on
the Park
Footprint

100 Units
600 Parking
Spaces







